



## LBWC50

turn and release set including Q5/6/7/8 spindle

### Product information

Code: 1501T020IPXXU

Finish: polished stainless steel

UNIT: Set

Collection: BASICS

Designer: Formani

EAN code: 8718009425213

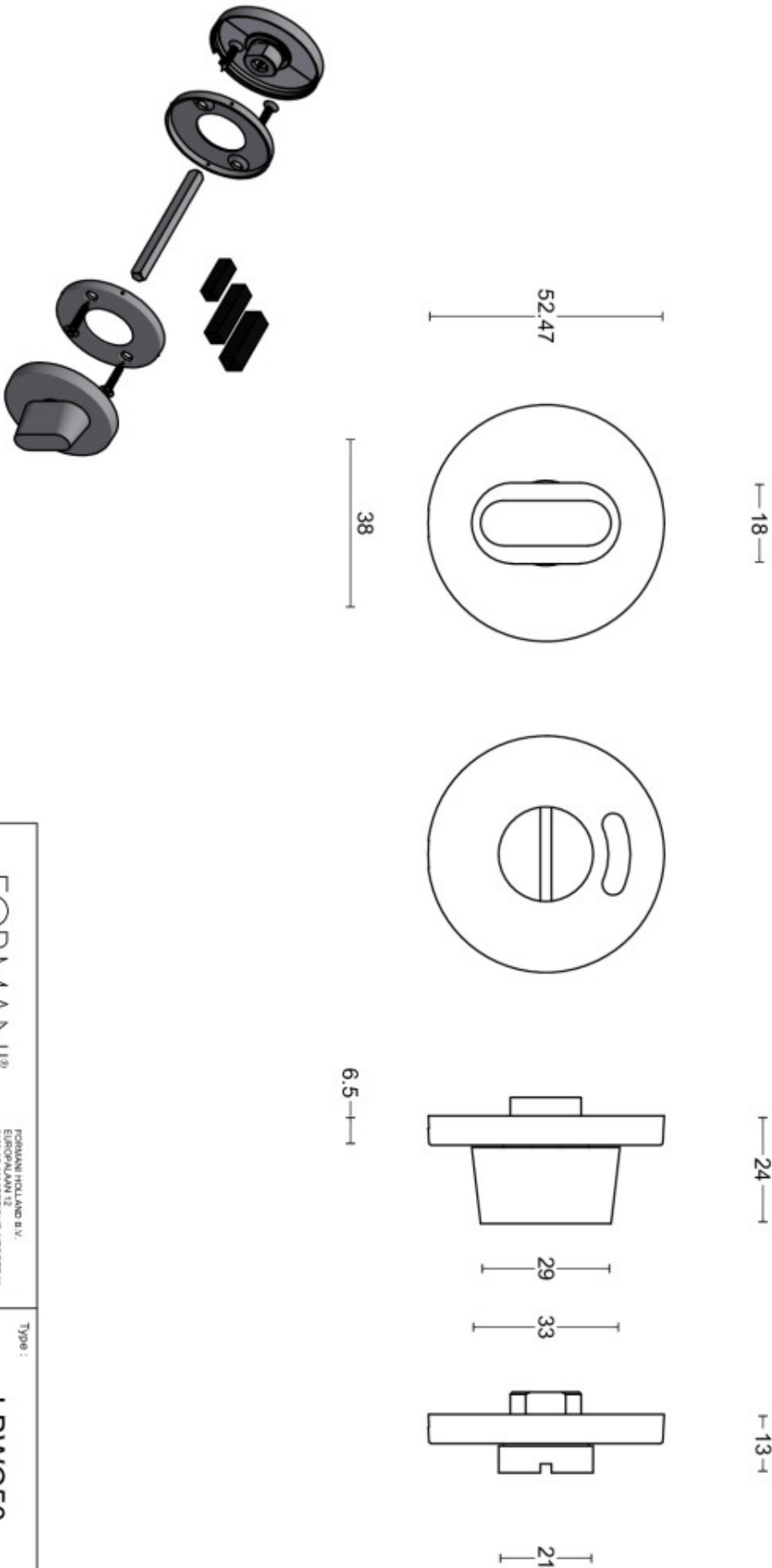
### BASICS by Formani

The BASICS series is a total concept collection consisting of door, window, and furniture fittings.

### Finishes

- satin stainless steel
- polished stainless steel
- satin black
- white
- PVD gunmetal
- PVD satin gold
- PVD polished copper
- PVD satin bronze
- PVD satin stainless steel
- bronze
- PVD light bronze

**LBWC50**  
 lever handle accessory  
 turn and release set  
 stainless steel



<div>FORMANI®</div> <div>FORMANI HOLLAND B.V. EUROPELAAN 12 6199 AS MAASRICHT-LARPOORT NL T +31 (0)6 3 208 9208 INFO@FORMANI.COM WWW.FORMANI.COM</div>		Type :	LBWC50	Version:
Formani filename: 1501T020_LBWC50_UNI_V02.dwg		Description: lever handle accessory turn and release set stainless steel		
Drawn by: Christian Brinbois				
Creation date: 1-9-2023				
		Format		
		A3		

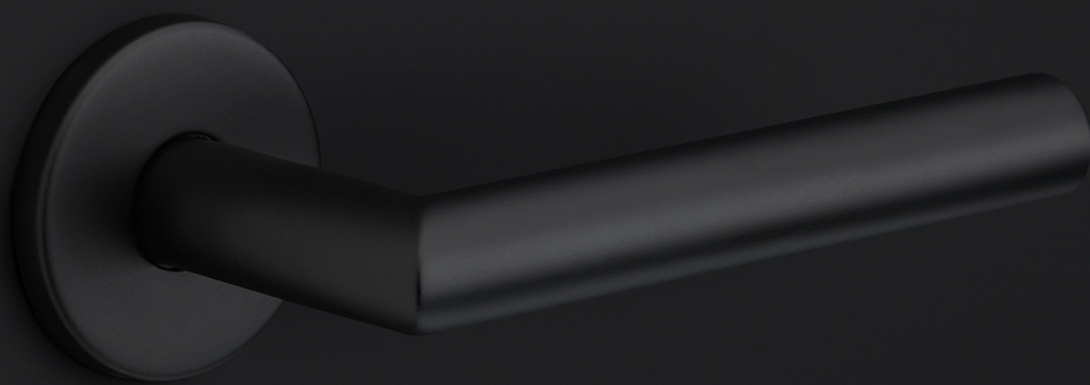
# BASICS

by Formani

**As a comprehensive total concept collection, our BASICS hardware series brings together various designs that are suitable for any budget. The designs are as understated, simple, and pure as they are luxurious, imparting an exquisite finishing touch to any interior and exterior design. We have developed this series because we would like to share OUR OBSESSION WITH DETAILS with everyone, regardless of the budget. The BASICS series consists of door, window, and furniture hardware alongside other accessories. The products are produced from stainless steel and are available in a variety of fashionable colours, including satin black, satin gold, copper, and base colours such as matte and polished stainless steel. Some products in this series have an EN1906 class 3 certification.**

# BASICS

by Formani



FORMANI®

# Brand story

**FORMANI has evolved considerably over the last few decades – from a Dutch family business to an internationally renowned designer brand, from door handles to total design concepts, from product development to collaborations with world-class designers. It was an evolution driven by pure ambition and courage. Our motto, ‘Obsessed with details’, epitomizes everything we do, from product to process, from strategy to service. Because it is these details that make the difference between good and perfect. At FORMANI, good is the enemy of great.**

---

Formani Holland b.v.  
Europalaan 12  
6199 AB  
Maastricht-Airport

T: +31(0)43 308 9000  
E: [info@formani.com](mailto:info@formani.com)

Chamber of Commerce:  
146 27 479

**FORMANI®**